



**E & A CONSULTING GROUP, INC.**

*Engineering Answers*

10909 Mill Valley Road, Suite 100 • Omaha, NE 68154-3950  
P 402.895.4700 • F 402.895.3599  
[www.eacg.com](http://www.eacg.com)

Dear Homeowner:

The SID has contracted concrete work to be done on the streets in your SID. A contractor will be on site to do work which includes removing the existing concrete that is damaged and replacing it with new pavement.

Throughout the course of this project, there could be some minimal damage done to yards and or sprinkler systems. The contractor that is on site will be responsible for replacing any damaged sprinkler lines and/or heads. They will also be replacing any sod that is torn up while on site. Once the new sod is laid, it will be the responsibility of the homeowner at each lot to water the new sod until it has re-established itself.

Before starting the work on site, each contractor must put in a call and have all the utilities in the area located. You might notice some areas in your yard that have been flagged and/or spray painted. This does not indicate the area in which they will be working. It is just to give them an idea of what kind of utilities are in the area that could possibly be hit while the contractor is on site working.

All work that is completed in public Right-of-Way and follow City of Omaha and Sarpy County specifications.

The work in your SID should not take longer than 30 days to complete. Please let me know if you have any questions or concerns on this at all.

Thank You,

A handwritten signature in black ink, appearing to read 'Eli Muehlich', written in a cursive style.

**Eli Muehlich**

Construction Administration Technician

**Engineering Answers...**to improve our communities

E & A Consulting Group, Inc.

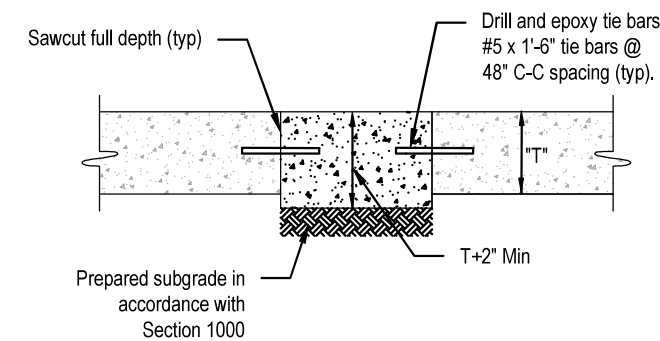
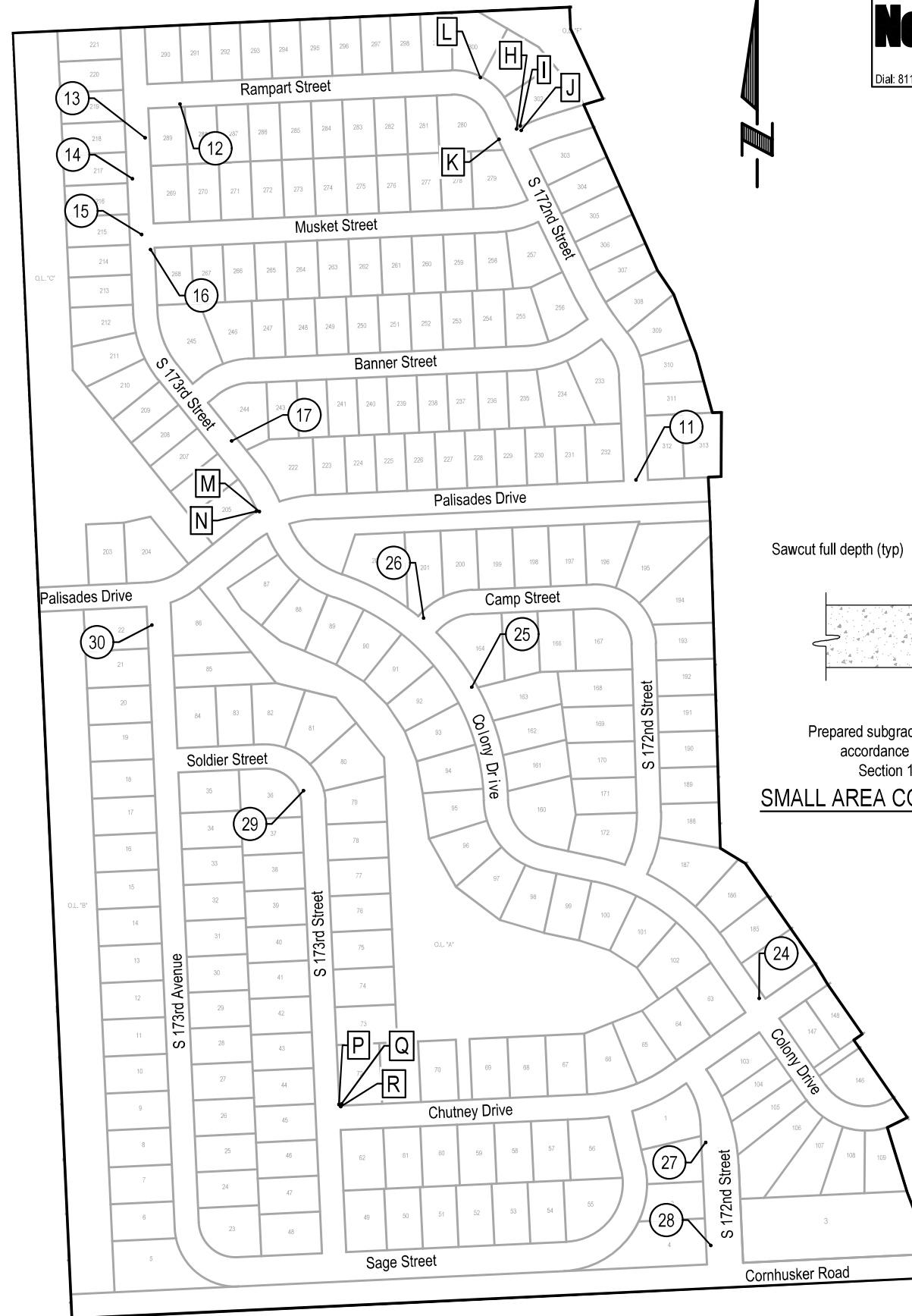
10909 Mill Valley Road, Suite 100 • Omaha, NE 68154

402.895.4700 (o) • 480.334.0246 (m)

[eacg.com](http://eacg.com)







**SMALL AREA CONCRETE PAVEMENT REPAIR DETAIL**  
NOT TO SCALE

**2024 STREET RECONSTRUCTION**

AREA NO.	NO. POURS	SAW CUT L.F.	CURB L.F.	WIDTH	X	LENGTH	LARGE AREA EST S.Y.	SMALL AREA EST S.Y.	NOTES
11	2	128		25.0	x	11.0		30.6	
				12.0	x	22.0		29.3	
12	1	36	1	10.0	x	10.0		11.1	
				3.0	x	10.0		3.3	Curb Inlet Throat
13	1	40	15	12.5	x	15.0		20.8	
14	2	50	30	25.0	x	15.0		41.7	
15	2	120	54	12.5	x	60.0	83.3		Adjust Manhole
				12.5	x	30.0	41.7		
				10.0	x	14.0	15.6		
16	1	18	6	3.0	x	10.0		3.3	
17	1	40		10.0	x	10.0		11.1	
24	1	82	19	13.0	x	10.0		14.4	
				19.0	x	10.0		21.1	
25	1	17	2	3.5	x	10.0		3.9	Curb Inlet Throat
26	1	55	30	12.5	x	30.0		41.7	
27	1	44	12	16.0	x	12.0		21.3	
28	1	40	15	12.5	x	15.0		20.8	
29	2	55	30	12.5	x	30.0		41.7	
30	2	70	45	12.5	x	45.0	62.5		

**2024 STREET RECONSTRUCTION**

AREA NO.	TYPE	APPROX. DIMEN.	EST S.F.	NOTES
H	Curb Ramp	6.0 x 10.0	60.0	ADA Plate - Cast Iron
I	Sidewalk	4.5 x 30.0	135.0	Adjust Sprinkler (as needed)
J	Imprinted Surface	5.0 x 12.0	60.0	
K	Sidewalk	4.0 x 8.0	32.0	Adjust Manhole, Adjust Sprinkler (as needed)
L	Sidewalk	4.0 x 4.0	16.0	Adjust Water Valve, Adjust Sprinkler (as needed)
M	Imprinted Surface	3.5 x 10.0	35.0	
N	Sidewalk	4.0 x 8.0	32.0	Adjust Manhole, Adjust Sprinkler (as needed)
P	Curb Ramp	6.0 x 10.0	60.0	ADA Plate - Cast Iron
Q	Sidewalk	4.5 x 30.0	135.0	Adjust Sprinkler (as needed)
R	Imprinted Surface	5.0 x 12.0	60.0	



**E & A CONSULTING GROUP, INC.**  
Engineering • Planning • Environmental & Field Services



**PALISADES 2024 STREET RECONSTRUCTION**  
SID 260  
SARPY COUNTY, NEBRASKA

**WEST**

Revisions	Date	Description
1	04/02/2024	ISSUED FOR PERMIT

Proj No: E2004020023  
 Date: 04/02/2024  
 Designed By: TMM  
 Drawn By: JME  
 Scale: 1" = 300'  
 Sheet: 3 of 6



2024 STREET RECONSTRUCTION									
AREA NO.	NO. POURS	SAW CUT L.F.	CURB L.F.	WIDTH	X	LENGTH	LARGE AREA EST S.Y.	SMALL AREA EST S.Y.	NOTES
1	2	65	5	18.0	x	26.0		52.0	
2	1	48	31	27.5	x	16.0		48.9	
3	1	40	15	12.5	x	15.0		20.8	
4	1	40	15	12.5	x	15.0		20.8	
5	2	50	30	12.5	x	30.0		41.7	
6	1	47	18	12.5	x	15.0		20.8	
				3.0	x	10.0		3.3	Curb Inlet Throat
7	1	47	18	12.5	x	15.0		20.8	
				3.0	x	10.0		3.3	Curb Inlet Throat
8	1	74	13	12.5	x	15.0		20.8	
				20.0	x	10.5		23.3	
9	2	50	60	25.0	x	30.0	83.3		Adjust Manhole
10	2	50	30	25.0	x	30.0	83.3		Adjust Manhole
11	2	128		25.0	x	11.0		30.6	
				12.0	x	22.0		29.3	
12	1	36	1	10.0	x	10.0		11.1	
				3.0	x	10.0		3.3	Curb Inlet Throat
13	1	40	15	12.5	x	15.0		20.8	
14	2	50	30	25.0	x	15.0		41.7	
15	2	120	54	12.5	x	60.0	83.3		Adjust Manhole
				12.5	x	30.0		41.7	
				10.0	x	14.0		15.6	
16	1	18	6	3.0	x	10.0		3.3	
17	1	40		10.0	x	10.0		11.1	
18	1	60	10	10.0	x	4.0		4.4	
				13.0	x	8.0		11.6	
19	2	110	30	12.5	x	30.0	41.7		
				12.5	x	30.0	41.7		
20	2	75	25	12.5	x	15.0		20.8	
				12.5	x	10.0		13.9	
21	1	52	26	18.0	x	8.0		16.0	
				12.5	x	16.0		22.2	
22	1	17	2	3.5	x	10.0		3.9	Curb Inlet Throat
23	1	40	15	12.5	x	15.0		20.8	
24	1	82	19	13.0	x	10.0		14.4	
				19.0	x	10.0		21.1	

2024 STREET RECONSTRUCTION									
AREA NO.	NO. POURS	SAW CUT L.F.	CURB L.F.	WIDTH	X	LENGTH	LARGE AREA EST S.Y.	SMALL AREA EST S.Y.	NOTES
25	1	17	2	3.5	x	10.0		3.9	Curb Inlet Throat
26	1	55	30	12.5	x	30.0		41.7	
27	1	44	12	16.0	x	12.0		21.3	
28	1	40	15	12.5	x	15.0		20.8	
29	2	55	30	12.5	x	30.0		41.7	
30	2	70	45	12.5	x	45.0	62.5		

2024 STREET RECONSTRUCTION						
AREA NO.	TYPE	APPROX. DIMEN.			EST S.F.	NOTES
A	Curb Ramp	6.0	x	10.0	60.0	ADA Plate - Cast Iron
B	Sidewalk	4.5	x	30.0	135.0	Adjust Sprinkler (as needed)
C	Imprinted Surface	5.0	x	12.0	60.0	
D	Curb Ramp	6.0	x	10.0	60.0	ADA Plate - Cast Iron
E	Sidewalk	4.5	x	30.0	135.0	Adjust Sprinkler (as needed)
F	Imprinted Surface	5.0	x	12.0	60.0	
G	Sidewalk	4.0	x	4.0	16.0	Adjust Water Valve, Adjust Sprinkler (as needed)
H	Curb Ramp	6.0	x	10.0	60.0	ADA Plate - Cast Iron
I	Sidewalk	4.5	x	30.0	135.0	Adjust Sprinkler (as needed)
J	Imprinted Surface	5.0	x	12.0	60.0	
K	Sidewalk	4.0	x	8.0	32.0	Adjust Manhole, Adjust Sprinkler (as needed)
L	Sidewalk	4.0	x	4.0	16.0	Adjust Water Valve, Adjust Sprinkler (as needed)
M	Imprinted Surface	3.5	x	10.0	35.0	
N	Sidewalk	4.0	x	8.0	32.0	Adjust Manhole, Adjust Sprinkler (as needed)
O	Sidewalk	4.0	x	4.0	16.0	Adjust Water Valve, Adjust Sprinkler (as needed)
P	Curb Ramp	6.0	x	10.0	60.0	ADA Plate - Cast Iron
Q	Sidewalk	4.5	x	30.0	135.0	Adjust Sprinkler (as needed)
R	Imprinted Surface	5.0	x	12.0	60.0	



<b>E &amp; A CONSULTING GROUP, INC.</b> Engineering • Planning • Environmental & Field Services <small>10809 Mill Valley Road, Suite 100 • Omaha, NE 68154          Phone: 402.265.4700 • Fax: 402.265.2599          www.eaconsulting.com          State of NE Certificate of Authorization #CA0008</small>	 <b>E &amp; A CONSULTING GROUP, INC.</b> Engineering Answers				
<b>PALISADES          2024 STREET          RECONSTRUCTION</b> <small>SID 260          SAPPY COUNTY, NEBRASKA</small>	<b>TOTAL QUANTITIES</b>				
<small>Proj No: P2024020023          Date: 04/02/2024          Designed By: TMM          Drawn By: JMB          Scale: N/A          Sheet: 4 of 5</small>	<small>Revisions</small> <table border="1" style="width: 100%; border-collapse: collapse;"> <thead> <tr> <th>Date</th> <th>Description</th> </tr> </thead> <tbody> <tr> <td> </td> <td> </td> </tr> </tbody> </table>	Date	Description		
Date	Description				



Revisions	Date	Description
1	04/02/2024	TMM
2		JME

Proj No: E200402023  
 Date: 04/02/2024  
 Designed By: TMM  
 Drawn By: JME  
 Scale: 1" = 300'  
 Sheet: 5 of 5

**COMPOSITE MAP**

**PALISADES  
 2024 STREET  
 RECONSTRUCTION**  
 SID 260  
 SAPPY COUNTY, NEBRASKA



**E & A CONSULTING GROUP, INC.**  
 Engineering • Planning • Environmental & Field Services  
 10809 Mill Valley Road, Suite 100 • Omaha, NE 68154  
 Phone: 402.656.4700 • Fax: 402.656.2559  
 www.eaag.com  
 State of NE Certificate of Authorization #CA0008